



Let's go further

 **EG Worksense**



EG Worksense

Unlocking Space Efficiency and  
Elevating Employee Experience



# Content

How EG Worksense solves modern workplace challenges	04
Who benefits most and how does it support different users?	05
Bringing people and teams together at the office	06
Drive smart decisions with reliable data insights	08
Customer case - Senate properties' smart office transformation	09
How to get started - Probably the fastest set up on the market	10
What are typical EG Worksense customer cases?	11
Why choose EG as a partner?	12
Ready to take the next step?	14

# Adapting to a changing world: How EG Worksense solves modern workplace challenges

## 01 See the big picture

Gain insight into your space usage with accurate data, enabling fact-based decisions instead of relying on assumptions.

## 02 IoT sensors for smarter workspaces

With the right IoT sensors, decision-makers receive valuable data on space utilization, while employees benefit from an app/web interface that supports efficient use of office resources during hybrid workdays.

## 03 Enhance employee experience

Continually optimizing the workspace helps your employees perform at their best, ensuring your office layout supports productivity.

## 04 Simplify office use

A user-friendly app/browser solution allows employees to view available workstations, meeting rooms, phone booths, parking spaces, and who's in the office. It also facilitates quick reporting of facility issues.

## 05 Reduce emissions by using space wisely

Efficient use of space helps control premises costs and reduces the company's environmental impact.

## 06 Save costs with data-driven decisions

Continuous data collection on space usage puts you in a stronger position for contract negotiations, facility adjustments, and future capacity planning.



## Who benefits most from EG Worksense, and how does it support different users?

A smart office solution like EG Worksense is beneficial for organizations of all sizes, but companies with 100 or more employees working in office environments tend to gain the most value. EG Worksense is specifically designed to meet the needs of three distinct target groups:

- Users of the office
- Facility managers
- Property owners

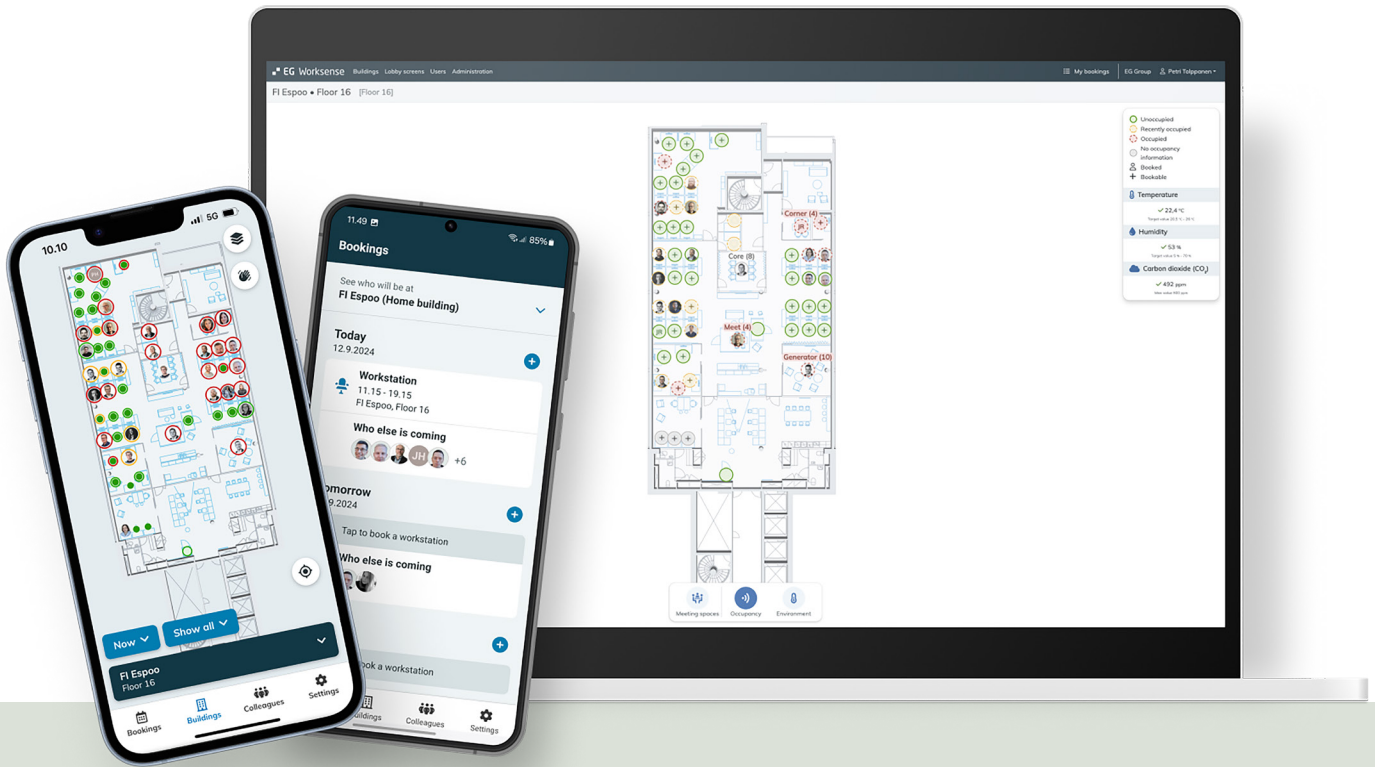


## USERS OF THE OFFICE

# Empowering connections: bringing people and teams together at the office

In recent years, companies have focused on ways to better support employees' hybrid work experiences. But perhaps it's time to ask a new question: how can employees contribute back to the company?

While it's widely accepted that in-person interactions are key to building a strong company culture, achieving a balanced hybrid model can be challenging. EG Worksense offers a practical solution for companies that want to support flexible work while also encouraging employees to connect face-to-face, fostering both productivity and team cohesion.



Empower employees to manage their hybrid workday with ease through our intuitive web and mobile apps:

- Effortlessly book workspaces, meeting rooms, and parking.
- See who's in the office or planning to be.
- Real-time availability of workstations, meeting rooms, phone booths, and parking spaces, thanks to sensor technology.
- Quickly report office issues with our service request feature, pinpointing the exact location on the floor plan for quick resolution.
- Air quality sensors provide employees with live insights on their work environment's air quality.

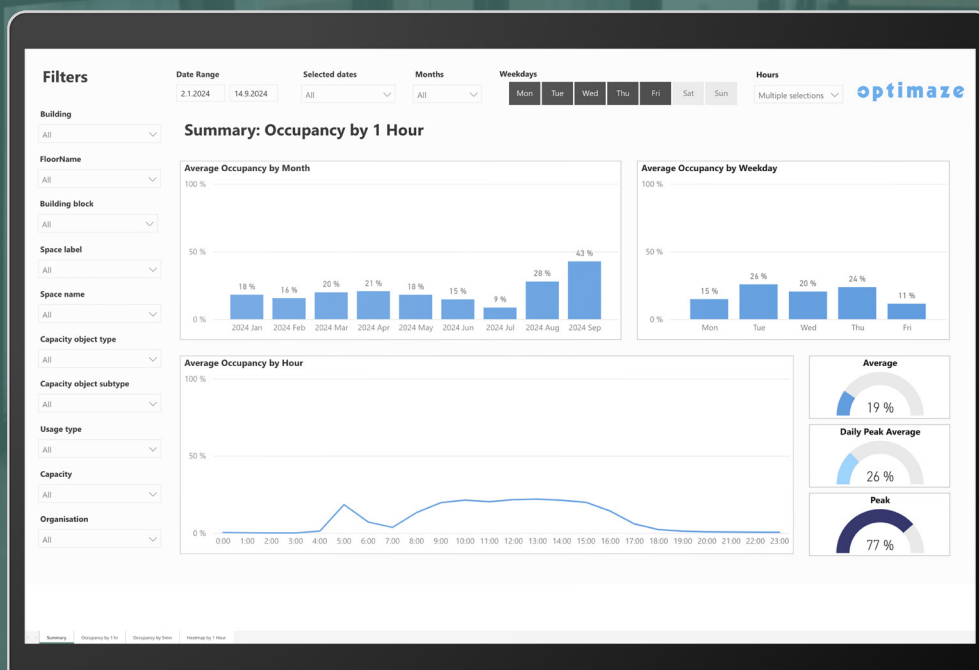
# FACILITY MANAGERS & PROPERTY OWNERS

## Drive smart decisions with reliable data insights

EG Worksense empowers property owners and facility managers to optimize space and enhance user satisfaction with data-driven insights.

By streamlining workspace management, EG Worksense enables real-time monitoring and efficient use of resources like meeting rooms, desks, and parking spaces.

With easy-to-access analytics, you gain a comprehensive overview to make informed decisions, reduce costs, and create a more agile, user-friendly environment. Simplify operations and elevate the workplace experience – all in one smart solution.



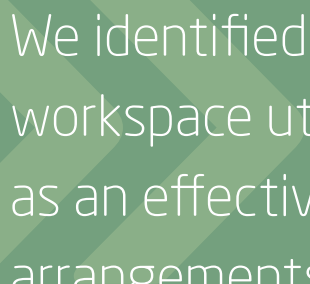


## WHAT CUSTOMERS SAYS ABOUT US

# Leading the charge: Senate properties' smart office transformation

In a strategic move to enhance workspace efficiency, Senate Properties selected the EG Worksense smart office solution. Senate Properties wanted real-time overview of occupancy rates for workstations and meeting rooms across government facilities, equipping users with the data necessary for effective space management.

Niko Kauhanen, Product Manager at Senate Properties, emphasizes the value of this solution:



We identified a need at Senate to measure workspace utilization. EG Worksense serves as an effective tool for planning hybrid work arrangements and adapting to changes in workplace dynamics. This solution not only enhances convenience for our clients but also significantly improves workplace efficiency.

## A pioneer of work environments

Senate Properties is the work environment partner of the Finnish government. They make sure that their customers have the best possible conditions to succeed in their work. Senate wants to ensure that the Finnish government is a pioneer of new ways of working and work environments. [Read more.](#)

# Probably the fastest set up on the market

The setup is designed to be effortless, so you can start experiencing the benefits right away—no delays, no hassle.



01

We'll start with a kick-off meeting, collect the input needed, and create your own database.



02

We'll create a digital twin for you. Then we'll plot capacity objects onto the floor plans.



03

EG Worksense is ready for use on smartphones and laptops to search for colleagues, find free spaces and booking desks.



04

Sensors can be installed in just one day. Next, connect your room booking and ticketing systems.



05

See occupancy, comfort levels and find free places in real-time. Follow your workplace analytics dashboard, so you can start optimizing spaces and FM services.

BASIC

PRO

# What are typical EG Worksense customer cases?

## **EG Worksense Study**

### Space utilization project

Easily assess your office space usage with our space utilization project. We'll provide sensors on loan to monitor occupancy, giving you valuable insights into how your spaces are currently being used. The project runs for a set period at a fixed price, with everything included - from device installation to a comprehensive final report.

This solution is ideal for customers going through restructuring, such as relocating offices or renegotiating lease agreements.

## **EG Worksense Basic and Pro**

### Established solution for administration and users

With our smart office software and sensor technology, you can create a more dynamic workplace. A permanent sensor installation allows you to continuously monitor office utilization and adjust as needed.

Employees benefit from the app and browser-based interface, enhancing their hybrid workday with easy access to office facilities, meeting room availability, and the option to reserve their preferred desk.

## **EG Worksense Enterprise**

### Established solution for property owners

Gain a clear understanding of how your building is utilized with advanced counting sensors that monitor both the building's shell and shared spaces like the canteen.

Continuous, high-level data collection provides valuable insights into building and floor usage. This data can also improve building services, such as restaurants and cafés, by offering real-time queue updates.

# Why choose EG?

- Trusted by some of the world's most demanding real estate owners and organizations.
- Security-audited to meet high standards.
- Sensitive data is protected in a dedicated, secure database.
- Enhanced security options, including the ability to mark high-security areas on floor plans.
- Customer-specific IP restrictions are available.
- Seamless single sign-on (SSO) integration using Microsoft Active Directory Federation Services (AD FS) 2.0.
- Supports SAML 2.0 and WS-Federation 2.0 for secure, flexible login options.



Trusted by

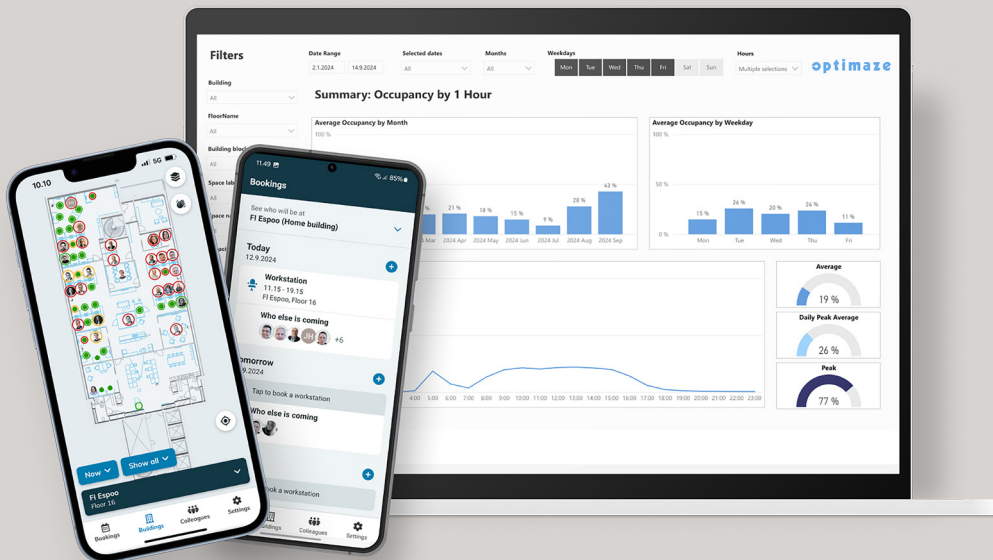
**Metso**

**pro**

 **SENAATTI**

 **Työllisyysrahasto**  
Sysselsättningsfonden | Employment Fund

 **VERO**  
**SKATT**



Ready to take the next step?

[Read more and book a free demo](#)

