



Let's go further

INTELLIGENCE FOR ENERGY AND SUSTAINABILITY MANAGEMENT



EG EnerKey – a shortcut to reliable Climate Reporting

When you use EG EnerKey for energy management you already have access to the data you need to report on your carbon emissions. We use your live data for setting science-based targets, optimize your energy consumption and automatically create up-to-date sustainability reports according to international standards.

CO2-reporting made easy with EG EnerKey

AWARENESS

ACKNOWLEDGE

ACTION

PRODUCTION

COMPENSATION

Energy and Sustainability Management is a process that starts with awareness, leading to reduced energy cost and potentially zero carbon emission.

We support you all the way from the initial monitoring of your consumption and emissions to zero emission.





DAREKON: Sustainability and profitability go hand in hand



Sustainability is a very complex matter. It is an ecological, social, economic, and humane consideration so that the earth would hopefully be saved for the future generations as well.

Energy is a big thing and we have succeeded quite well in saving it, although there is still some work to be done there. A lot of materials are recycled in production – almost all of them – and we take the recyclability of materials into account in our procurement policy as far as possible. Waste materials are resold, and waste generation is minimized at all stages. This is also financially viable.

Many of our customers have strong sustainability principles and we are naturally committed to them. We also strive to inform customers about different options, raw materials and working methods. We work in cooperation with the customer to develop the product and production to be sustainable and economical.

Staff well-being is the last and perhaps most important part of sustainability and is emphasized in business operations. Social sustainability means equality, justice, and community.

Humane sustainability means by least having safe working practices and an environment where work does not endanger anyone's health.

We are committed to these goals. All this is documented in our management system, implemented in all our units and there is evidence of compliance in all our operations”, says Jari Aspegren, Darekon's Quality Manager.





DATA-DRIVEN SUSTAINABILITY REPORTING



When you want to report on your sustainability, you must control and monitor your consumption data. With EG EnerKey we collect data directly from the best source whether this is meter data, IOT data or billing data.

EG EnerKey contains all the integrations you need for online data collection. Should it be impossible to obtain live data, data can be entered manually or estimated automatically from historical data and corrected afterwards.

With all consumption data available, EG EnerKey you can follow your consumption in real time and draw your sustainability report when you need it, based on data rather than assumptions.

EG EnerKey is designed to support a systematic energy management process and certified for fulfilling the energy management requirements set in the ISO 50001 and ISO 14001 standards.

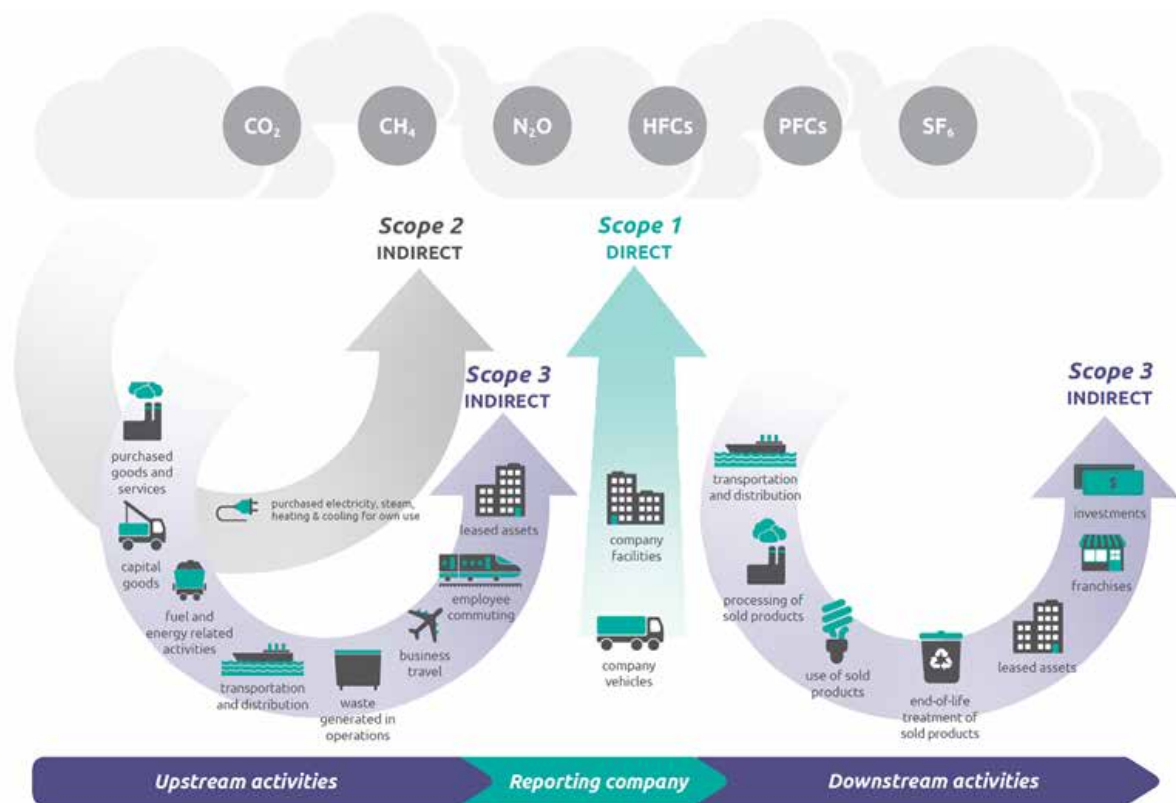
The data about everything you monitor & report on EG EnerKey, you can automatically update to your GHG report, that is all consumption of energy, electricity, heating, waste, etc. on a meter and/or facility level.



Reporting in compliance with GHG and GRI

With EG EnerKey we make sure that your reporting is compliant with the GHG protocol calculations and relevant GRI standards.

We support the GHG protocol calculations and reporting according to GRI 305 Emissions disclosures.



Source: WRI/WBCSD Corporate Value Chain (Scope 3) Accounting and Reporting Standard (pdf)



SUPPORTED GRI DISCLOSURES

GRI DISCLOSURE 305-1 - SCOPE 1 - Direct GHG emissions

- Gross direct (Scope 1) GHG emissions in metric tons of CO2 equivalent
- Biogenic CO2 emissions in metric tons of CO2 equivalent
- Base year for the calculation
- Source of the emission factors

GRI DISCLOSURE 305-2 - SCOPE 2 - Energy indirect GHG emissions

- Gross location-based energy indirect (Scope 2) GHG emissions in metric tons of CO2 equivalent.
- If applicable, gross market-based energy indirect (Scope 2) GHG emissions in metric tons of CO2 equivalent
- Base year for the calculation
- Source of the emission factors

GRI DISCLOSURE 305-3 - SCOPE 3 - Other indirect GHG emissions

- Gross other indirect (Scope 3) GHG emissions in metric tons of CO2 equivalent.
- Other indirect (Scope 3) GHG emissions categories and activities included in the calculation.
- Base year for the calculation
- Segmentation in Upstream and Downstream categories
- Source of the emission factors

GRI DISCLOSURE 305-4 - GHG emissions intensity

With Scope 1-3 GHG emissions in metric tons of CO2 equivalent

EG EnerKey provides the basis for calculation of

- GHG emissions intensity ratio for the organization.
- Organization-specific metric (the denominator) chosen to calculate the ratio.

- Size, such as m2 specific emissions by gross floor space
- Number of full-time employees
- Number of tenants in apartment facility portfolio
- Types of GHG emissions included in the intensity ratio; whether Scope 1,2 or 3.

GRI DISCLOSURE 305-5 - Reduction of GHG emissions

EG EnerKey provides the basis for calculation of

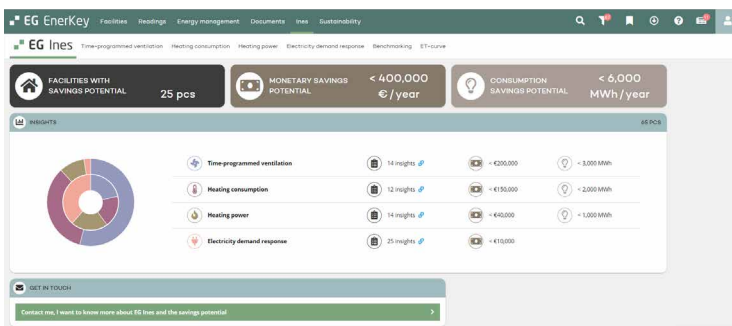
- GHG emissions reduced as a direct result of reduction initiatives, in metric tons of CO2 equivalent.
- Base year or baseline, including the rationale for choosing it.
- Scopes in which reductions took place; whether Scope 1,2 or 3

On top of that EG EnerKey partly supports these disclosures as applicable

- GRI 302 Energy
- GRI 303 Water and Effluents
- GRI 306 Waste



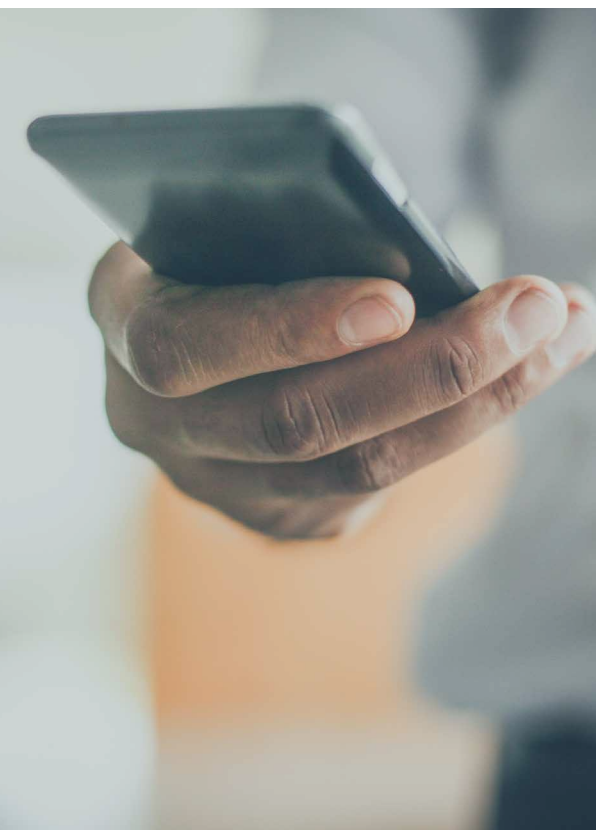
The most intelligent way to sustainability reporting



[Read more about EG Ines](#)

With EG EnerKey you have the advantage of our built-in artificial intelligence, EG Ines.

- EG Ines automatically analyses consumption and weather data and points clearly facilities with abnormal energy use. Ines calculates consumption, cost and emission saving potential for different use-cases
- EG Ines findings can be shifted with single click to energy saving actions in EG EnerKey's Energy Management tool
- EG Ines releases energy experts' time to fixing problems instead of manually locating those



Relevant reports for various audiences

With EG EnerKey you can do much better than one report for all purposes. Our reporting tool enables you you make specific report for targeted audiences, including exactly the data they need.

- Up-to-date reports based on data
- Visualization of data for easy overview and understanding
- Reports on demand

All standard reports have been designed based on our customers' needs, to improve energy efficiency and reduce the environmental footprint.



Easy to use data for many types of reporting

As the built-in sustainability reporting is GHG and GRI compliant and the data can be used as part of your reporting to several internal standards.

And by the way, there is a lot of them. Read more about some of the most relevant standards and organizations.

GHG The GHG Protocol is the leading internationally recognized standard for calculating climate footprint. The GHG Protocol provides companies with a uniform way of calculating their total climate footprint, where all greenhouse gases are converted to CO₂ using the concept of CO₂ equivalents (also known as CO₂ e).



[Read more about GHG Protocol](#)



[Read more about GRI](#)

GRI, Global Reporting Initiative The GRI Standards are a modular system of interconnected standards. They allow organizations to publicly report the impacts of their activities in a structured way that is transparent to stakeholders and other interested parties.



SBTi The Science Based Targets initiative (SBTi) drives ambitious climate action in the private sector by enabling organizations to set science-based emissions reduction targets.



[Read more about SBTi](#)



[Read more about GRSB](#)

GRESB GREBS is the global ESG benchmark for real estate and infrastructure. We synthesize data and provide actionable insights to our members, partners, and investors.

EU Taxonomy The EU taxonomy is a classification system, establishing a list of environmentally sustainable economic activities. The EU taxonomy provide companies, investors and policymakers with appropriate definitions for which economic activities can be considered environmentally sustainable.



[Read more about EU Taxonomy](#)



[Read more about CSRD](#)

CSRD The Corporate Sustainability Reporting Directive (CSRD) is an EU ESG (environmental social governance) standard released by the European Commission designed to make corporate sustainability reporting more common, consistent, and standardized like financial accounting and reporting.

UN Global Compact As a participant of the UN Global Compact, a company is required to communicate with their stakeholders on an annual basis about progress in implementing the Ten Principles www.unglobalcompact.org/what-is-gc/mission/principles and efforts to support societal priorities.



[Read more about UN Global Compact](#)



[Read more about the Covenant of Mayors for Climate and Energy](#)

The Covenant of Mayors for Climate and Energy

The Covenant of Mayors is the world's largest movement for local climate and energy actions. The Covenant was launched in 2008 in Europe with the ambition to gather local governments voluntarily committed to achieving and exceeding the EU climate and energy targets.

DGNB DGNB, German Sustainable Building Council, has developed its own certification system to make sustainable building applicable on a practical level, measurable and thus comparable. The DGNB certification system is considered the most advanced system of its kind in the world and is internationally recognised as the global benchmark for sustainability.



[Read more about DGNB](#)





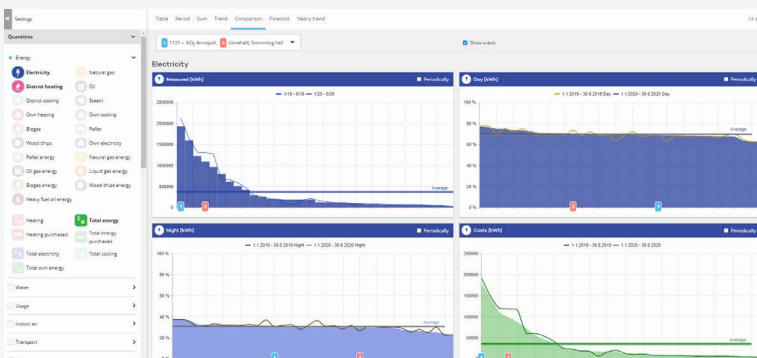
More than just a report

EG EnerKey is much more than just a reporting tool. What we got for you is a tool for radical change of your consumption and CO2-emission.

The software enables you to work with online and validated data, set targets for reduction, estimate the return of investment, develop climate-friendly action plans, monitor effects and much more.

All the tools you need

- Support for managing the consumption of more than 90 types of energy and utilities
- Energy consumption indicators
- Clear, versatile visualization
- Wide variety of available data-collection from any source and sensors, control of meter data
- Excellent support for reporting, e.g. reporting for energy efficiency agreements



Our customers say...

EG EnerKey's SEMS platform enables us to constantly improve our sustainability and energy efficiency by showing consumption, costs and emissions in parallel.

Aki Paavola
Maintenance Manager
Fennia Facilities

Wihuri makes efforts to improve energy efficiency. My experiences from EnerKey have been very positive and also Energy Manager Service is working exactly as expected.

Timo Numminen
Facility Manager
Wihuri Corporation

The data, we get from EG EnerKey, is in key role in our energy management work

Tuomas Helin
Environmental Manager
Keva

EG Ines found quickly a facility where ventilation time program setting was wrong. Ventilation was still in a boost mode how was set after renovations project. This caused an unnecessary consumption of 15 000 €/a when ventilation was on full power also outside occupation hours.

Jouni Arola,
Facility department
City of Lahti

EG EnerKey's Ines helped us to optimize ventilation operation times. We achieved 9000 € annual saving just by that in one building.

Eero Takala,
HVAC Expert,
City of Riihimäki

EG Enerkey is comprehensive! I get all reports and analyses I need in my work to improve our energy efficiency, internal and external communication, and reporting. Collaboration with EG has been great.

Klaus Kangas,
Superintendent, Facility department
City of Kokkola

All we need is less

EG EnerKey is a sustainability and energy management system that enables you to automatically identify emissions and energy saving potential using artificial intelligence and Machine Learning. Thanks to real-time consumption data, planning and investment in proposals for energy optimization generated by EG EnerKey, costs can be reduced by up to 30%.

EG EnerKey can also monitor the impact of any previous energy efficiency measures. Energy management, carbon emissions reporting, automatic energy consumption alarms and cost reporting are all available in EG EnerKey. They are designed based on our customers' needs for improving energy efficiency and reducing their climate footprint. The solution is ISO 50001 and ISO14001 certified and supports the work with GRI Standards reporting.



REDUCED EMISSIONS



LESS WASTE



100% DATA-DRIVEN
SUSTAINABILITY



LESS ENERGY
CONSUMPTION



A REDUCED RESOURCE
CONSUMPTION



INCREASED PRODUC-
TIVITY AND IMPACT

About EG

EG delivers Nordic vertical software that helps our customers move their businesses further.

Our software is embedded with highly specialized vertical knowledge and is developed based on a deep understanding of our customers' profession and industry.

CONTACT INFORMATION

Jaakko Huhta

Vice President

jaakko.huhta@enerkey.com

+358 40 029 2257

www.eg.fi

Jussi Kaasalainen

Key Account Manager

jussi.kaasalainen@enerkey.com

+358 45 672 3313

www.eg.fi